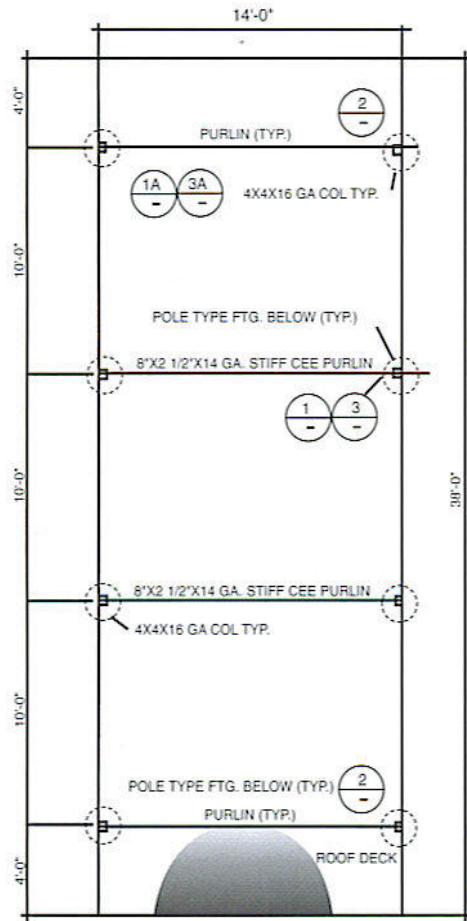


# Steel 14' x 38' x 14' / 20 psf Carport Installation Instructions



**ROOF FRAMING & FOUNDATION PLAN**

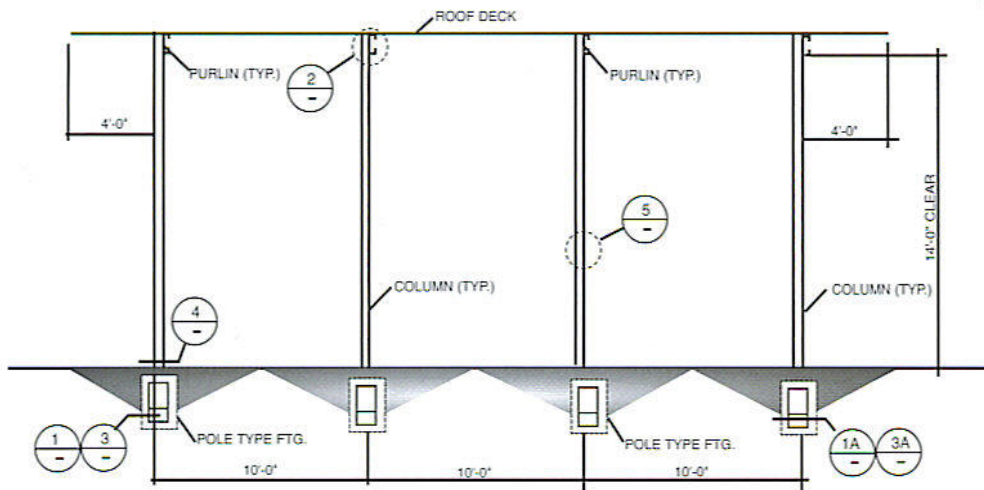
SCALE: 1/4" = 1'-0"

## ASSEMBLY INSTRUCTIONS

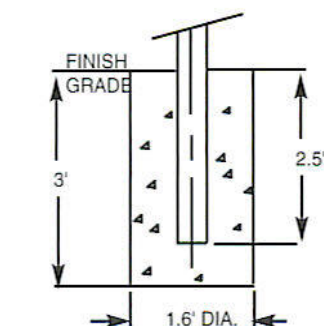
SET COLUMNS IN HOLES AND RUN STRING LINES AT GROUND LEVEL AND TOP OF THE COLUMNS. ALIGN COLUMNS AND CHECK DIAGONAL DIMENSIONS TO BE SQUARE. FILL HOLES WITH CONCRETE AND POSITION THE COLUMNS FOR THE ROOF SLOPE USING A LEVEL TO PLUMB AND STRING LINES FOR HEIGHT AND ALIGNMENT. WHEN CONCRETE IS CURED SCREW PURLINS TO THE COLUMNS AND ROOF DECK TO THE PURLINS.

## NOTES

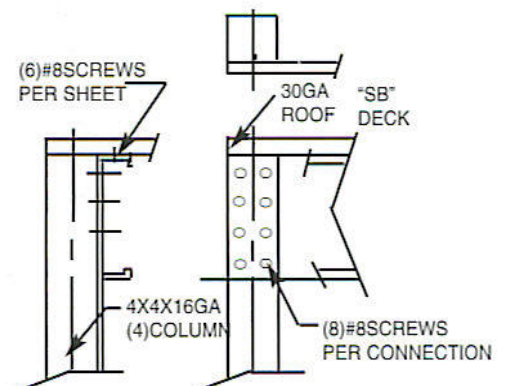
THIS PRODUCT IS VERY FLEXIBLE AND DIFFERENT TECHNOLOGIES CAN BE USED. DO NOT LEAVE COLUMNS WITHOUT PROPER BRACING. EACH SHEET PROVIDES 36" OF COVERAGE IN WIDTH.



**CROSS SECTION**



**CAISSON FOOTING**



**PURLIN TO COLUMN**